

DSpace JSPUI

DSpace preserves and enables easy and open access to all types of digital content including text, images, moving images, mpegs and data sets

[Learn More](#)




DSpace@JDPS Mv.Daryapur

Digital Library/ Institutional Repository of JDPS Mv. Daryapur (Dist. Amravati) is integration of digital content scattered in different places online mostly the Google Scholar and ResearchGate repository those of created institutionally by the staff and scanned images of retrospective and heritage collection.

Communities in DSpace

Choose a community to browse its collections.

 **Botany (वनस्पती विज्ञान)**
Faculty and Departmental Collection

Discover

Author	
Kale, S.T.	14
JDPS MV	12

Subject	
India	7
Doctoral Theses	6

Date issued	
2010 - 2020	61
2000 - 2009	4

DSpace preserves and enables easy and open access to all types of digital content including text, images, moving images, mpegs and data sets

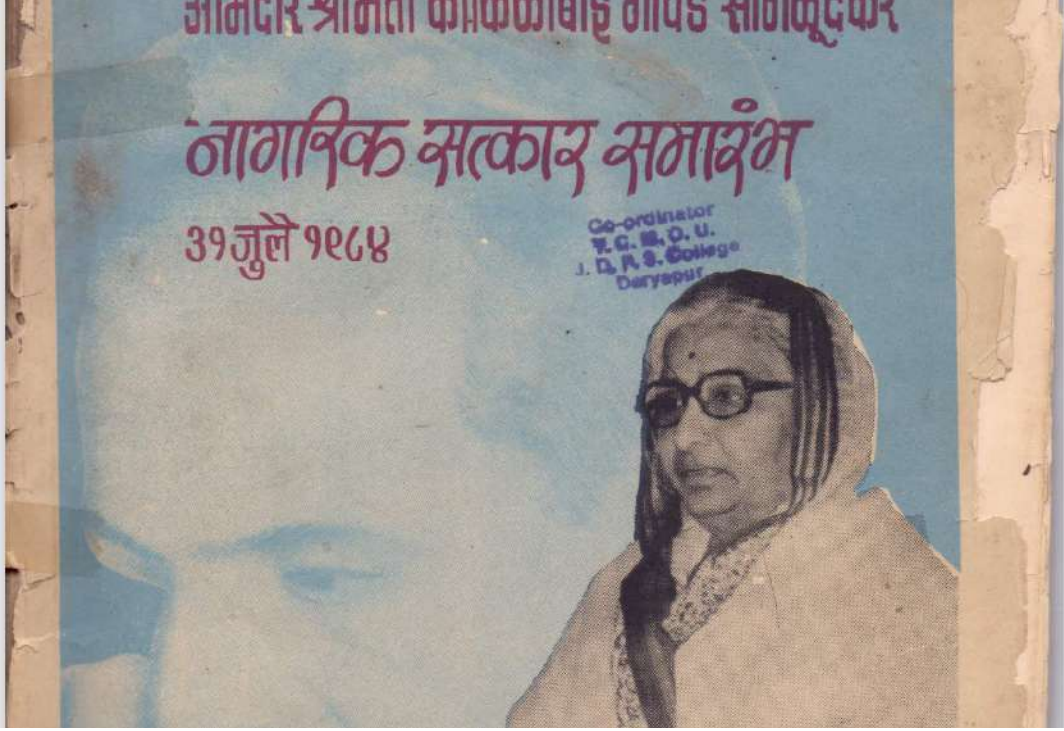
Learn More



DSpace@JDPS Mv.Daryapur / NAAC- IQAC / 1. Internal Quality Assurance Report (IQAR)

Please use this identifier to cite or link to this item: <http://localhost:8080/xmlui/handle/123456789/159>

Title:	Internal Quality Assurance Report (IQAR) 2014-15
Authors:	JDPS Mv
Keywords:	NAAC IQAC Report 2014-15
Issue Date:	Jun-2015
Publisher:	Principal JDPS Mv. Daryapur
Abstract:	Internal Quality Assurance Report (IQAR) is content of all seven criteria activities completed by the college during the year 2014 -15. The IAQR is submitted to the National Assessment and Accreditation Council (NAAC) Bangalore as part of quality sustenance measures to the next cycle assessment.
URI:	http://localhost:8080/xmlui/handle/123456789/159



DSpace JSPUI

DSpace preserves and enables easy and open access to all types of digital content including text, images, moving images, mpegs and data sets

[Learn More](#)



DSpace@JDPS Mv.Daryapur

Digital Library/ Institutional Repository of JDPS Mv. Daryapur (Dist. Amravati) is integration of digital content scattered in different places online mostly the Google Scholar and ResearchGate repository those of created institutionally by the staff and scanned images of retrospective and heritage collection.

Communities in DSpace

Choose a community to browse its collections.

[Botany \(वनस्पती विज्ञान\)](#)

Discover

Author: [Kale, S.T.](#) 14

Subject: [India](#) 7

Date issued: [2020 - 2021](#) 5

DSpace preserves and enables easy and open access to all types of digital content including text, images, moving images, mpegs and data sets

[Learn More](#)

DSPACE

DSpace@JDPS Mv.Daryapur

College Administration (महाविद्यालय प्रशासन विभाग) Community home page



Browse

Issue Date	Author	Title	Subject
------------	--------	-------	---------

Discover

- Author
- JDPS Mv 1
 - University Grants Commission 1
 - नागरी सत्कार समिती 1
- Subject
- 2 (f) & 12 B 1
 - धारण क्षेत्र : सात व बारा 1
 - नागरी सत्कार समारंभ जुलै १९८६ 1
 - श्रीमती कोकिलबाई गावंडे 1

Please use this identifier to cite or link to this item: <http://localhost:8080/xmlui/handle/123456789/259>

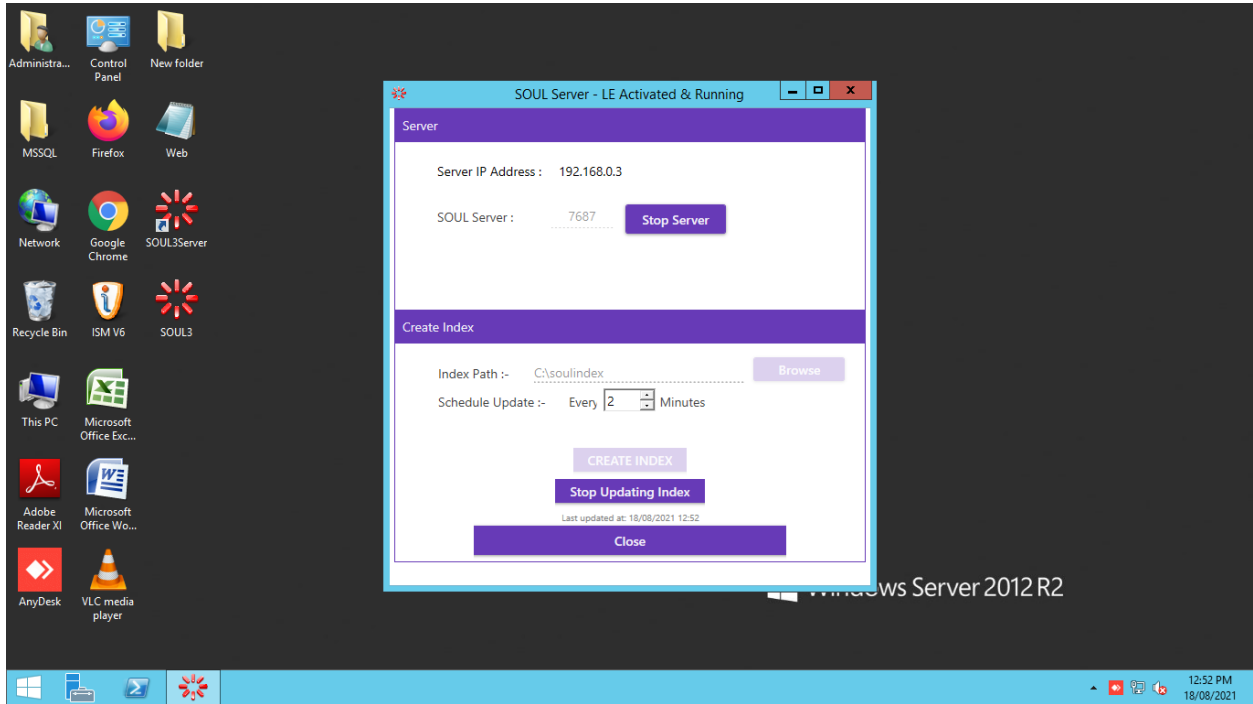
Title:	Purushottam Kale yanchya kathancha sangrah (Ph.D. Thesis)
Authors:	Bhilpawar, M.N.
Keywords:	Va. Pu. Kale Katha
Issue Date:	2005
Publisher:	Unpublished doctoral thesis
URI:	http://localhost:8080/xmlui/handle/123456789/259
Appears in Collections:	M.N. Bhilpawar

Files in This Item:

File	Description	Size	Format	
01_title.pdf		27.86 kB	Adobe PDF	View/Open
05_contents.pdf		32.23 kB	Adobe PDF	View/Open
06_preface.pdf		119.6 kB	Adobe PDF	View/Open

COLEGE LIBRARY

(Screenshot of Microsoft SQL server using by the college library & Installed on Library PC to run the SOUL 3.0)



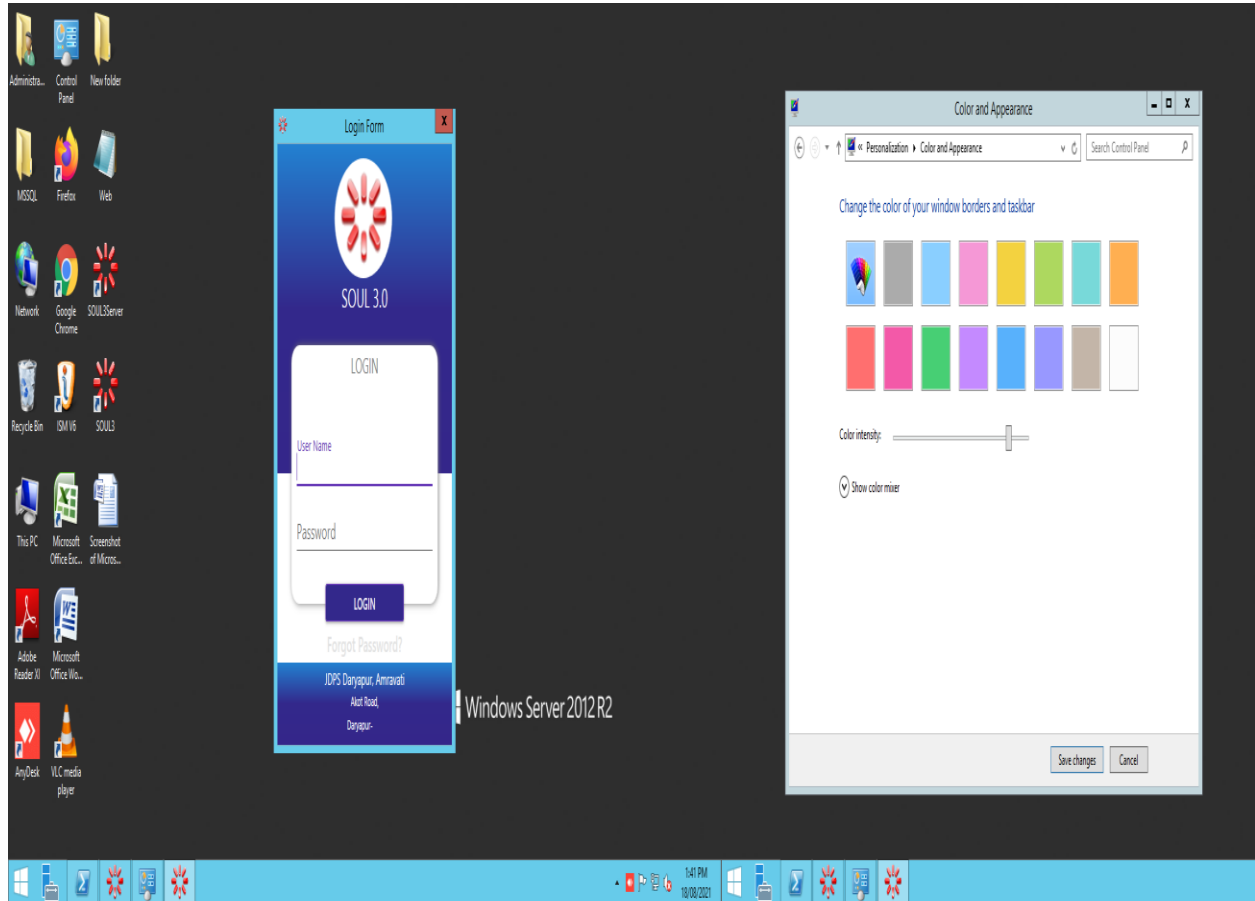
COLEGE LIBRARY

(Screenshot of Integrated Library Management Software (ILMS) using in the library that is Home screen of SOUL 3.0 recently upgraded by the INFLIBNET Centre Ahmadabad)

The screenshot displays the SOUL 3.0 Home screen for a university library. The interface is clean and modern, with a blue header bar containing the application name and navigation icons. The main content area is divided into several sections:

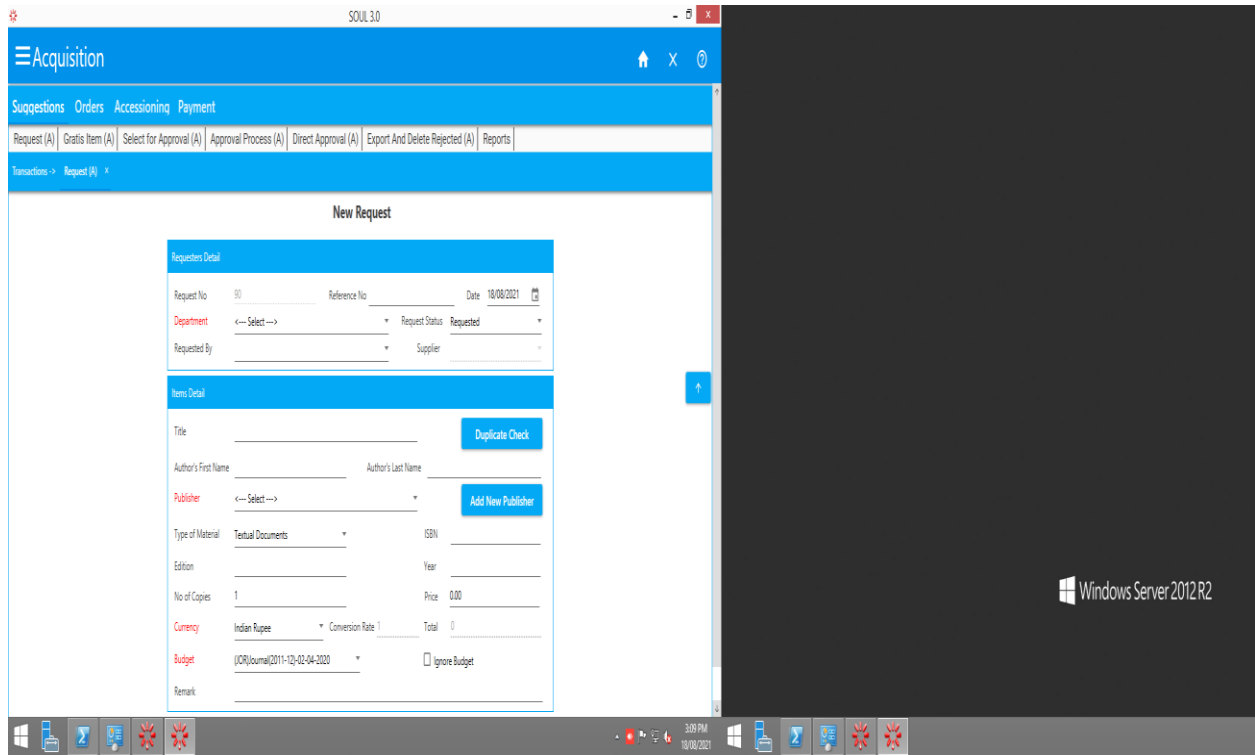
- Summary Cards:** A grid of eight cards providing key statistics:
 - Total Members: 8,367
 - Total Material (Unique Copies): 20,222
 - Total Material (Multiple Copies): 29,183
 - Last 5 Entered Accession No: B1079, B1078, B1077, B1076, B1075
 - Pending For Order: 4
 - Pending For Received: 0
 - Pending For Accessioning: 0
 - ILL Issued Books: 0
- Task Chart:** A central chart showing performance over time (Today, Week, Month) for three categories:
 - For Technical Support:** Today: 30, Week: 219 (circled in red), Month: 3
 - For Library Support:** Today: 30, Week: 219, Month: 3
 - Books Issued:** Today: 30, Week: 219, Month: 3
 - New Books:** Today: 30, Week: 219, Month: 3
 - New Member:** Today: 30, Week: 219, Month: 3
- Footer:** Displays the version (Vcs.3.0.0 Limited Edition), login information (Logged in as: supervisor, Library Name: JPS Daryapur, Amravati, Daryapur), and the system tray (Windows Server 2012 R2, date: 18/08/2021, time: 1:25 PM).

Login Screen of SOUL 3.0 (Integrated Library Management Software)



SOUL 3.0 Library Software

Representative Screenshot, Acquisition module



SOUL 3.0 Library Software

Representative Screenshot, Catalogue module

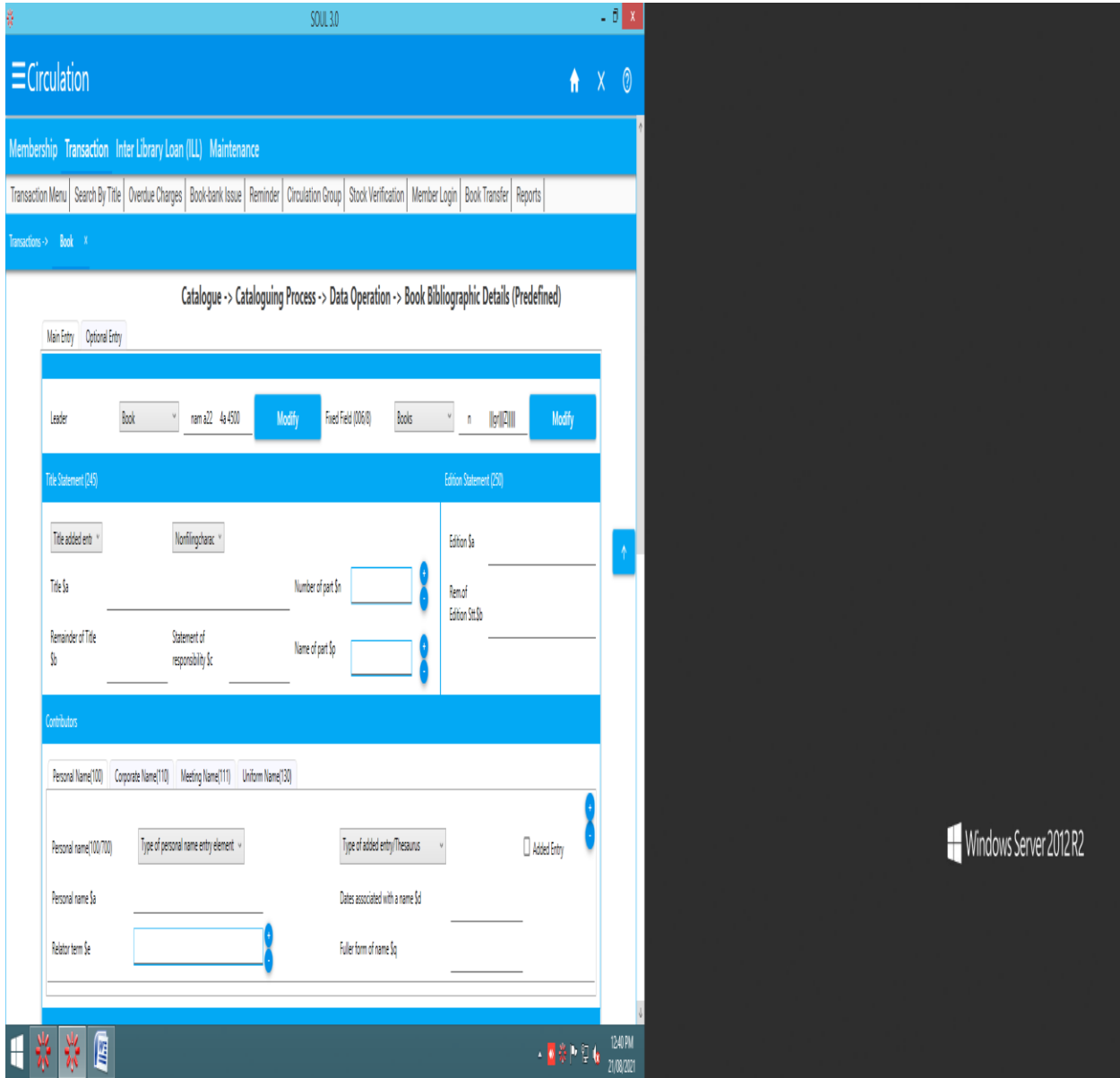
The screenshot displays the SOUL 3.0 Catalogue module interface. The window title is 'SOUL 3.0'. The main menu includes 'Catalogue', 'Import/Export', 'User Services', and 'Reports'. The breadcrumb trail shows 'Title(s) In-Process > Book > Theses > Data Operation'. The current screen is 'Catalogue -> Cataloguing Process -> Data Operation -> Book Bibliographic Details (Predefined)'. The interface is divided into several sections:

- Leader:** Contains a dropdown menu set to 'Book', a text field with 'nam a22 4a 4500', a 'Modify' button, a 'Fixed Field (006/R)' dropdown set to 'Books', a text field with 'n [0] [0] [0]', and another 'Modify' button.
- Title Statement (245):** Includes a 'Title added entry' dropdown set to 'Nonfilingcharac', a 'Title \$a' field, a 'Number of part \$n' field with a spinner, a 'Remainder of Title \$c' field, a 'Statement of responsibility \$c' field, and a 'Name of part \$p' field with a spinner.
- Edition Statement (250):** Includes an 'Edition \$a' field, a 'Rem of Edition \$a:\$b' field, and a 'Name of part \$p' field with a spinner.
- Contributors:** Includes tabs for 'Personal Name(100)', 'Corporate Name(110)', 'Meeting Name(111)', and 'Uniform Name(30)'. The 'Personal Name(100)' section has a 'Personal name(100/700)' dropdown set to 'Type of personal name entry element', a 'Type of added entry/thesaurus' dropdown set to 'Thesaurus', an 'Added Entry' checkbox, a 'Personal name \$a' field, a 'Dates associated with a name \$d' field, a 'Relator term \$e' field with a spinner, and a 'Fuller form of name \$q' field.

The Windows taskbar at the bottom shows the system tray with the time '12:30 PM' and date '21/02/2023'. The background of the desktop is 'Windows Server 2012 R2'.

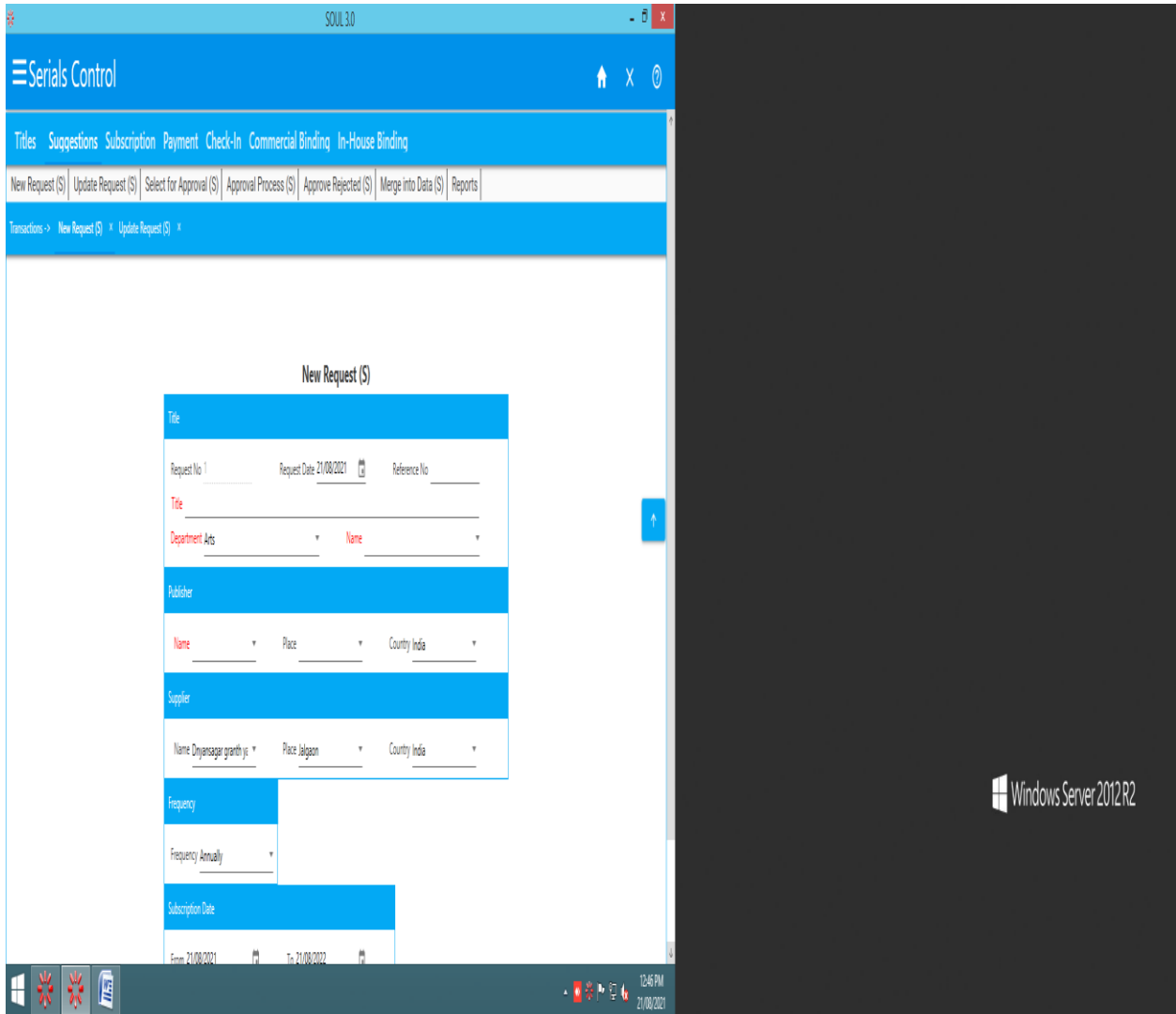
SOUL 3.0 Library Software

Representative Screenshot, Circulation module



SOUL 3.0 Library Software

Representative Screenshot, Serial Control module



SOUL 3.0 Library Software

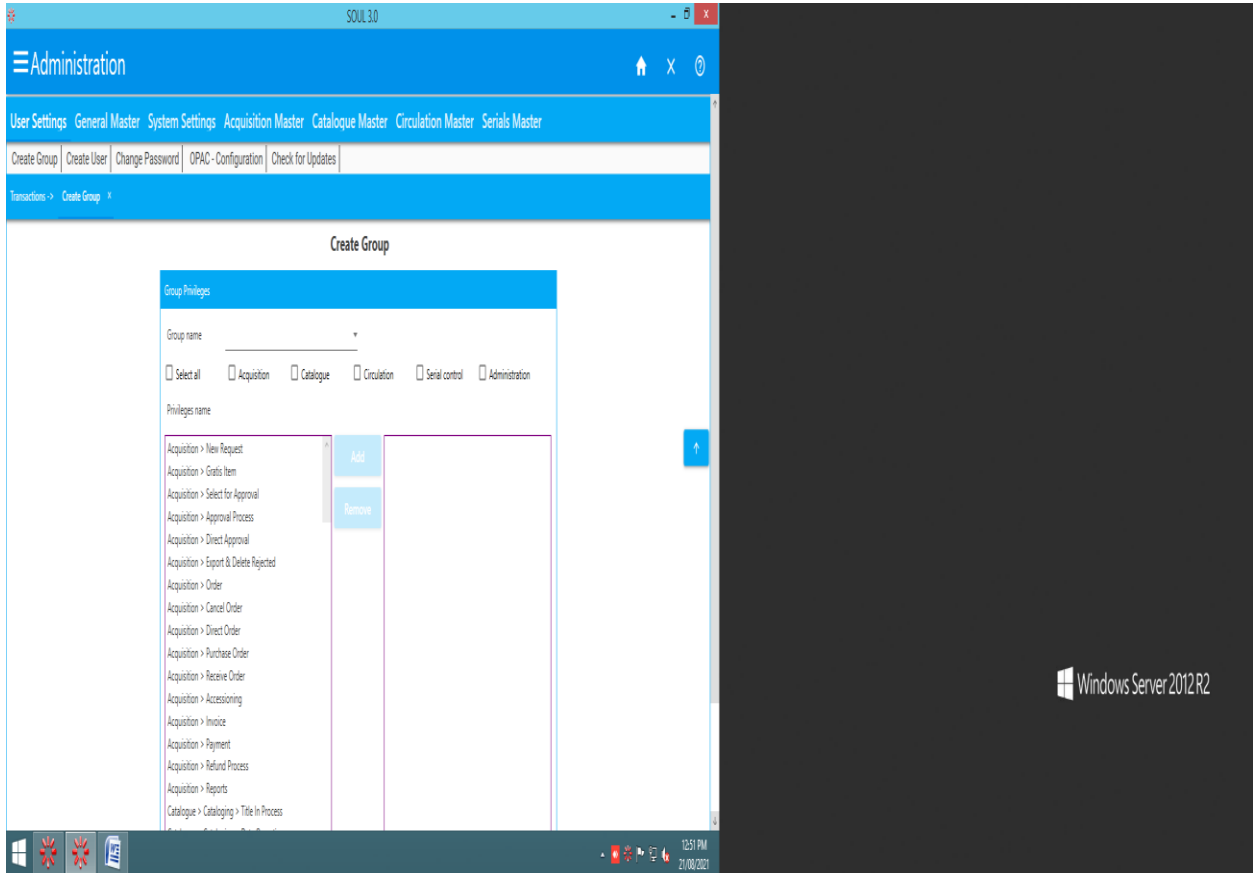
Representative Screenshot, OPAC module



Windows Server 2012 R2

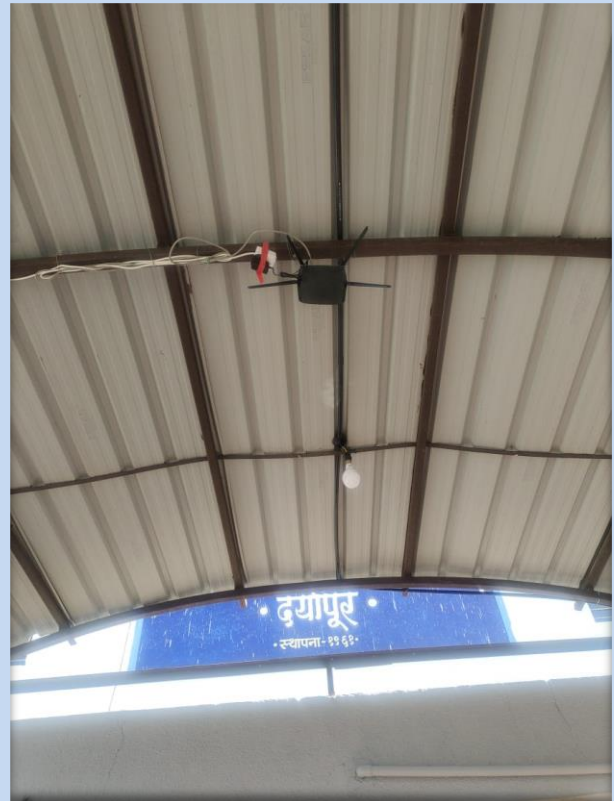
SOUL 3.0 Library Software

Representative Screenshot, Administration module



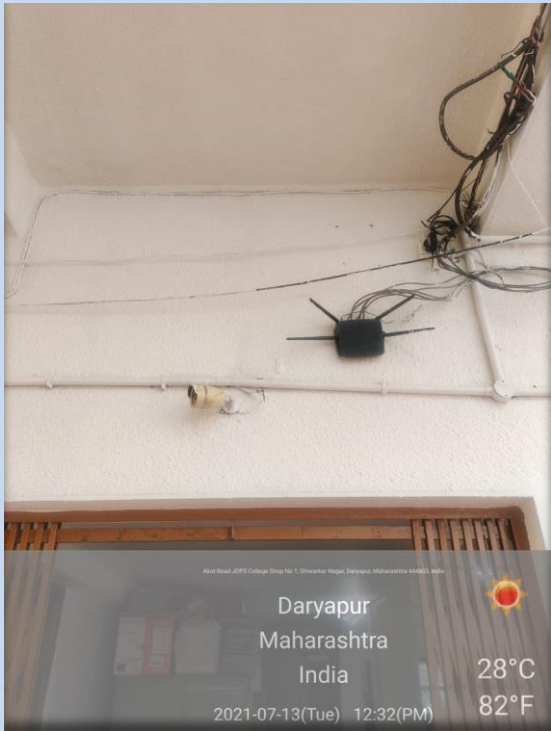
Shri Shivaji Education Society Amravati's
J.D.Patil Sangludkar Mahavidyalaya, Daryapur.

Wi-fi Facility of College Campus



**Wi-fi Router at West of
Administrative Block**

Administrative Block



**Wi-fi Router on the East side of
Administrative Block**



Wi-fi Router at the Economics Dept.

**Wi-fi Router at
Department of
Chemistry**



**Wi-fi Router at
Department of
Commerce and Management**



**Wi-fi
Router at
Departme
nt of
Botany**

